

NF55A-80A**55''****800Nits Open Frame Android Signage**

Key Feature

- 3840×2160 physical resolution with 1920x1080 display resolution, 800nits brightness
- Built-In Speakers
- Android SoC with RK3288 chip Quad core system
- Industrial grade components
- Open frame design

Specification

Display

Model	NF55A-80A
Screen Size (Diagonal)	55 inch
LCD Tech.	ADS
Physical Native Resolution	3840 × 2160
Display Resolution	1920 x 1080
Aspect Ratio	16 : 9
Brightness	800 cd/m ²
Contrast	1200:1
View Angle	178°(H) / 178°(V)
Display Color	1.07B
Color Gamut	74% NTSC
Response Time	8ms
Life Time (Light Source)	50,000 Hrs

Internal Player

O/S	Android 7.1
CPU	Rockchip Quad-Core RK3288
RAM/ROM	2G / 8G
Input	USB x 2 / SIM Card x 1 / TF Card x 1
Output	HDMI x 1 / Audio x 1
External Control	IR EXT x 1
Networks	LAN x 1 / WiFi
Built-In Speaker	5W x 2 (8Ω)

Power

Power Supply	AC 100~240V 50/60Hz
Power Consumption (Rated)	190 W

Environment

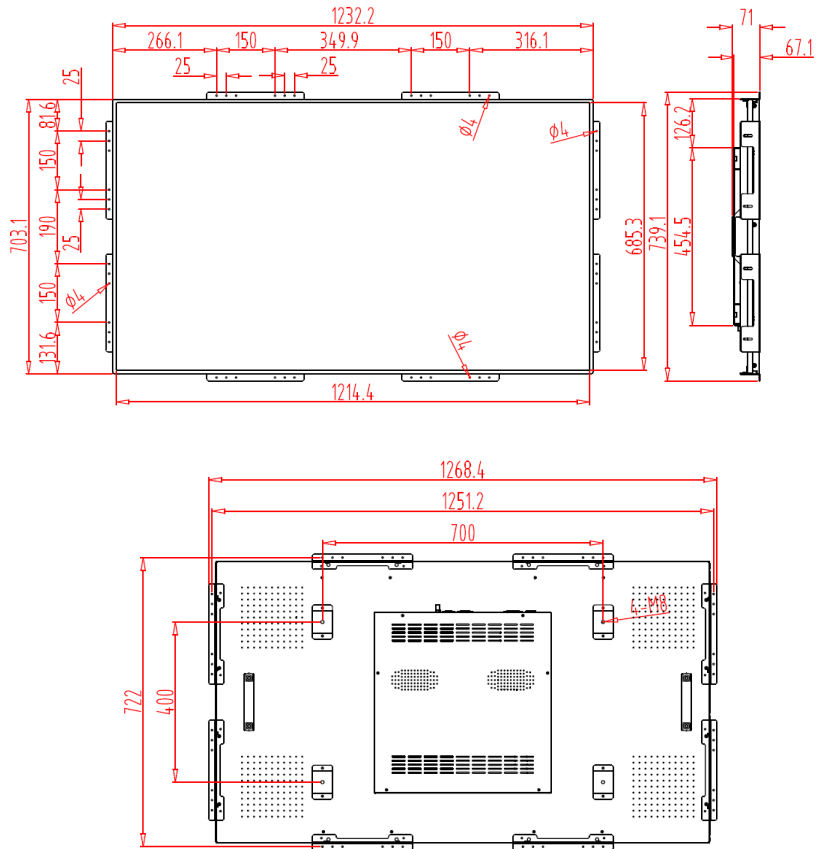
Operation Temperature	0°C~40°C
Operation Humidity	20%~80% RH

Physical

Color	BLACK or GRAY as option
Tempered Glass	No
Body Dimension	1232.2(W) × 703.1(H) × 71(D) mm
Set Weight	TBD
Package Dimension	TBD
Package Weight	TBD
Mounting Holes	700 × 400

Specification

Dimension Drawing



Product Image

