



PQM-4130 PRODUCT MANUAL

- We greatly appreciate your purchase of PQM-4130.
- To be sure you take maximum advantage of all features PQM-4130 offered, read these instructions carefully and use the set properly. Be sure to keep this manual for future reference should any questions or problems arise.

■ SAFETY PRECAUTIONS



CAUTION
RISK OF ELECTRIC SHOCK
DO NOT OPEN



CAUTION: TO REDUCE THE RISK OF ELECTRIC SHOCK, DO NOT REMOVE COVER(OR BACK). NO USER-SERVICEABLE PARTS INSIDE. REFER SERVICING TO QUALIFIED SERVICE PERSONNEL.



The lightning flash with arrowhead symbol, within an equilateral triangle, is intended to alert the user to the presence of uninsulated "dangerous voltage" within the product's enclosure that may be of sufficient magnitude to constitute a risk of electric shock to persons.

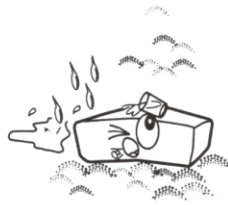


The exclamation point within an equilateral triangle is intended to alert the user to the presence of important operating and maintenance (servicing) instructions in the literature accompanying the appliance.

■ NOTE ON USE



- Avoid high temperatures. Allow for sufficient heat dispersion when installed on a rack.



- Keep the set free from moisture, water, and dust.



- Do not let foreign objects in the set.



- Unplug the power cord when not using the set for long periods of time.



- Do not let insecticides, benzene, and thinner come in contact with the set.



- Handle the power cord carefully. Hold the plug when unplugging the cord.

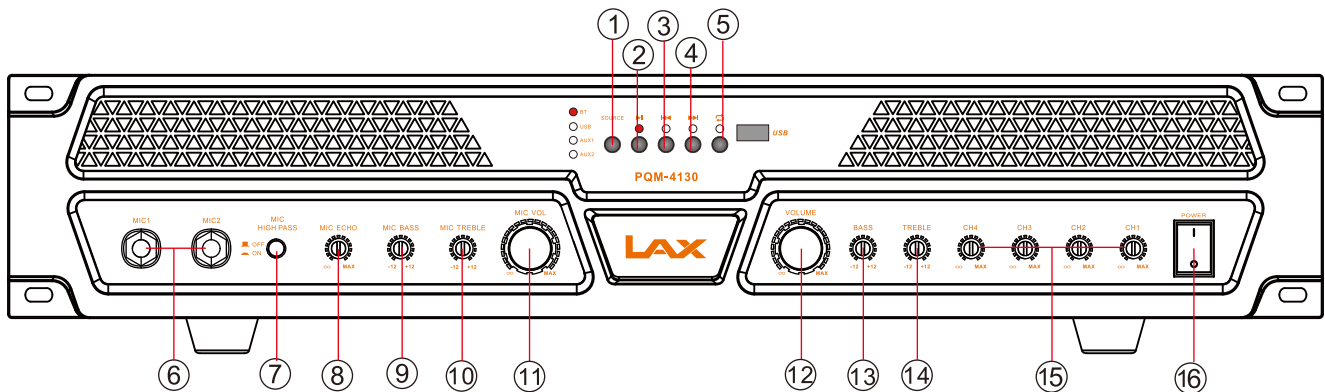


- *£For sets with ventilation holes£
- Do not obstruct the ventilation holes.



- Never disassemble or modify the set in any way.

FRONT-PANEL FUNCTIONS



1. Input source switch.

2. PLAY/PAUSE

3. PREV

4. NEXT

5. REPEAT

6. Mic input jack

7. Microphone High-pass switch

8. Echo volume-adjust the reverberation level of the voice.

9. Mic bass is used to adjust mic.1 and mic.2 low freq. Tone.

10. Mic treble is used to adjust mic.1 and mic.2 high freq. Tone.

11. Mic volume is used to adjust mic.1 and mic.2 volume.

12. Volume-adjust the level of the music sound

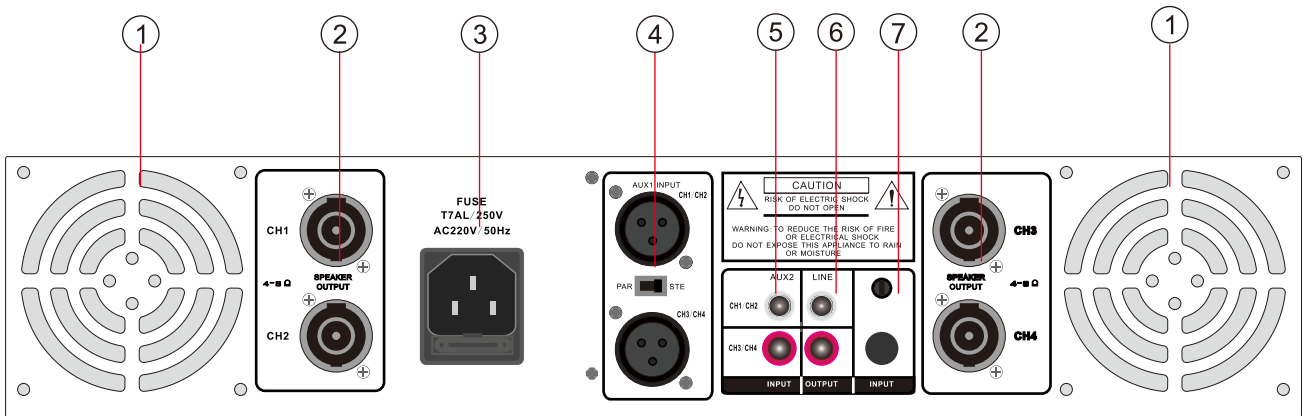
13. Bass adjust the low freq, tone of the sound

14. Treble adjust the hi freq, tone of the sound.

15. CH1-CH4 music volume independent control

16. ON/OFF switch

BACK-PANEL FUNCTIONS



1.FAN

2.SPEAKER A & B-Connect 8Ω speaker A&B to these terminal.

3.AC POWER LINE-Connect the power plug to 220V/50Hz AC Line.

4.AUX1 Audio Input Jack

5.AUX2 Audio Input Jack

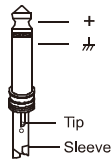
6.LINE Audio Output Jack

7.Alarm Priority Input Jack And Volume Control

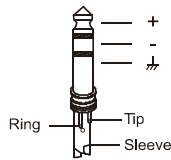
Wire Connections

Either the 1/4" TRS phone jack or XLR connector can be wired in balanced and unbalanced modes, which will be determined by the actual application status, please wire your system as the following wiring examples:

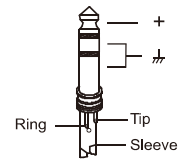
For 1/4" Phone jack



TS Type Unbalanced

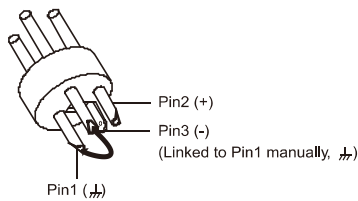


TRS Type Balanced

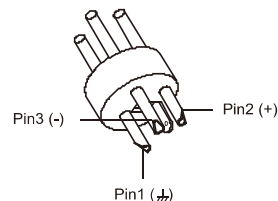


TRS Type Unbalanced

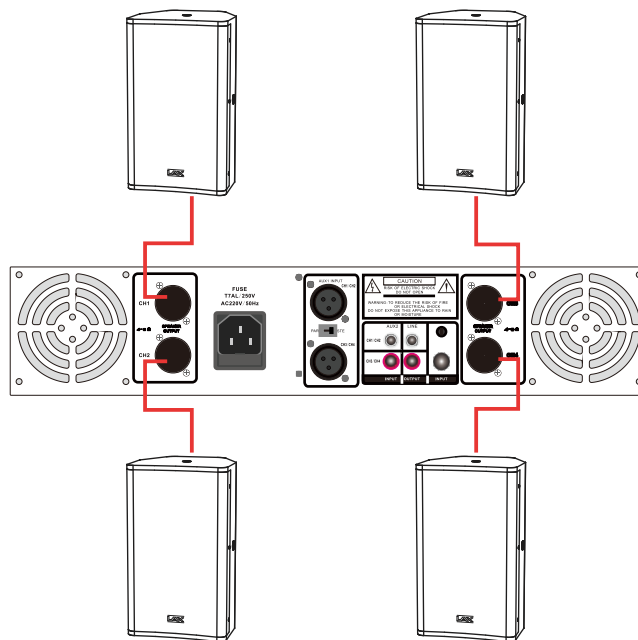
For XLR connector



XLR Type Unbalanced

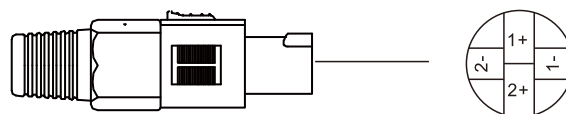


XLR Type Balanced



For Passive Speaker Cabinets

Please only use the power connectors to make connections with other signal source equipment for the passive speaker cabinets. The power connector has four terminals: 1+, 1-, 2+, 2-.



In our cabinets, only 1 +/1- are used to connect the Speaker+/Speaker-, and 2 +/2- are not used.

SPECIFICATIONS

POWER REQUIREMENTS AC 220V/50Hz

MAIN AMPLIFIER:

POWER OUTPUT 150W X 4(8Ω)

Frequency Response 20Hz~20KHz

Max.Input Capability 250mV/47K

C/N $\geq 80\text{dB}$

Distortion $\leq 0.1\%$

Load Impedance 8Ω

Mic.Input Sensitivity 20mV/10K

CONTROLS AND FILTERS:

BASS $\pm 12\text{dB}$

TREBLE $\pm 12\text{dB}$

ACCESSORIES

User Manual 1PC

Screw Driver 1PC

- The specification presents only as a reference, the value of weight and size are approximation.
- The maintenance of the products of our company is submitted to agency, please contact with your agency.
- Our product is improved ceaselessly and we don't give inform especially when the specification and function may be changed.
- The content of this manual has been collated carefully, if there is any mistakes caused by printing or other reason, please contact with us, our company will serve you warmly.



LAX SOUNDS, THE WORLD LISTENS

Guangzhou Ruifeng Digital Technology Co., Ltd.

Address: No.10, Shilou Section, Shilian Road, Panyu District,
Guangzhou, Guangdong, P.R.C

Tel: 020-3928 0003

E-mail: lax@lax-pro.com

www.lax-pro.com