

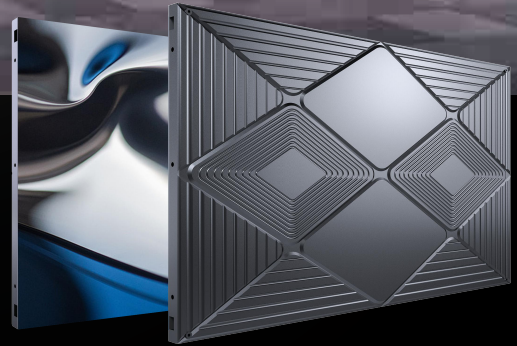


Most Competitive Micro LED & Mini LED Display Manufacturer



# NX COB P0.6

## Fine Pitch LED DISPLAY



Free & Seamless Splicing



Ultrahigh Refresh Rate



Wide Viewing Angle



Quick Response Time



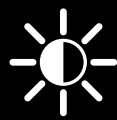
More Color Depth



Wide Color Gamut



Superior Contrast Ratio



High Brightness



Excellent Heat Dissipation

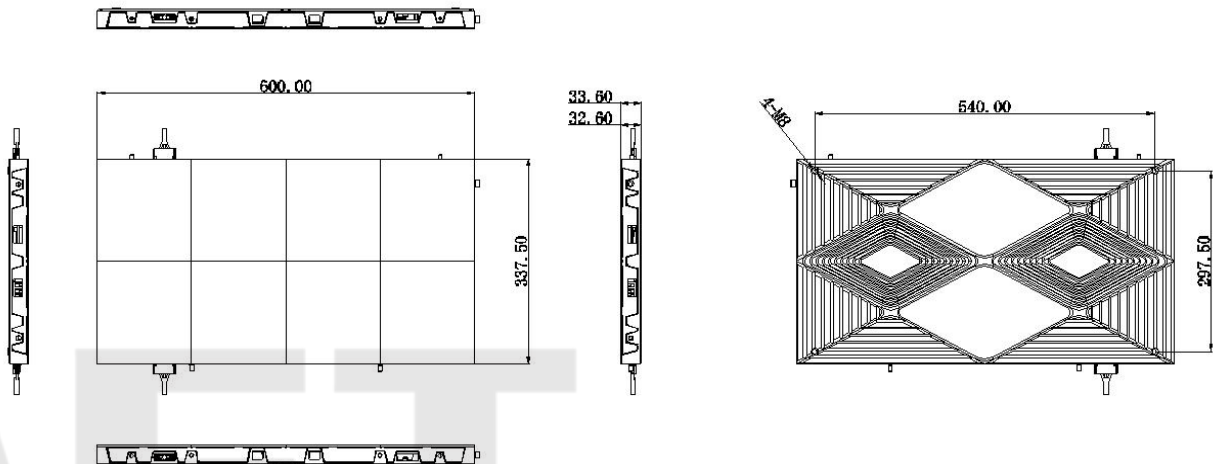


NX is a cost-effective indoor fine pitch LED display with a cabinet aspect ratio of 16:9. NX adopts an adjustable connector to minimize the use of cables for more stable and better performance. The popular cabinet sizes are widely used in the LED display market, it can fulfill various scenarios. NX comes with a high refresh rate, high contrast ratio, and wide viewing angle. This series is full front maintenance with a long LED lifetime. It's definitely the quality product for money.

## DIMENSIONS IN MM

**NX COB** 600 x 337.5 x 33.6 mm

4.7 kg



ACT

# NX COB Series

Physical Parameter	Pixel Pitch	0.625 mm
	LED Type	Full-Flip-Chip COB
	Pixel Density (m <sup>2</sup> )	2,560,000 pixels/m <sup>2</sup>
	Pixel Density (Cabinet)	230,400 pixels/cabinet
	Resolution of LED Module (W × H)	240 x 270 pixels
	Resolution of Cabinet (W × H)	960 x 540 pixels
	LED Module Size(W × H)	150 x 168.75 mm
	Cabinet Size (W × H × D)	600 x 337.5 x 33.6 mm   27 in
	No. of Modules Per Cabinet(W × H)	4 x 2
	Cabinet Area	0.2025 m <sup>2</sup>
	Aspect Ratio	16:9
	Weight (per cabinet)	4.7kg
	Cabinet Material	Die-casting Aluminium
Optical Parameter	Brightness - Adjustable	600-1000 nits Adjustable
	Contrast Ratio	5000 : 1
	Horizontal Viewing Angle	≥170°
	Vertical Viewing Angle	≥170°
	Scan Rate	60
	Color Temperature - Adjustable	5000~10000 K Adjustable
Electrical Parameter	Average Power Consumption	≤110 W/m <sup>2</sup>
	Max Power Consumption	≤370 W/m <sup>2</sup>
	Input Power Voltage	AC220V ± 15%, 50/60 (Hz)
Processing Parameter	Drive Mode	Constant Current Common Cathode
	Frame Rate	50~60 Hz
	Refresh Rate	7680 Hz
	Gray Scale Processing	16 bit
Operation Conditions	Operating Temp/Humidity	-10 - 45 °C/ 10% - 90%RH
	Storage Temp/Humidity	-40 - 60 °C/ 10% - 70%RH
	IP Rating	IP65 Module Surface ONLY
	Life span, typ.	100,000 Hrs
Service	Servicing	Front
Certification	Certification	CE, CB

**\*Product information is subject to change without prior notice.**



9-10th Floor , 1st Building, E Zone, Guangda We Valley,  
4th keji Road, Songshan Lake High-tech Industrial Development Zone,  
Dongguan City, Guangdong Province ,China

0086-769-38820268 [www.aetint.com](http://www.aetint.com) [sales@aetled.com](mailto:sales@aetled.com)